



LARIMAR

CITY & RESORT



Horizon View



## Horizon View

---

The maximum luxury  
within your reach

Luxury apartments at Larimar City & Resort, Punta Cana, which offers a unique and exclusive experience.

Located in a privileged location, the apartments are designed to provide views of the skyline and the sea, thanks to their open layout.





Note: The surfaces expressed, the dimensioning of pillars, the levels, steps of stairs, the situation of the downspouts, ventilation ducts and windows may experience variations during the work due to the requirements of the execution project, technical or legal requirements, or in order to improve the functionality of the houses. The textures and materials, as well as the furniture expressed in this plan are merely indicative and informative. Some turn of door or disposition of toilets may suffer some variation. The houses are sold unfurnished.



Note: The surfaces expressed, the dimensioning of pillars, the levels, steps of stairs, the situation of the downspouts, ventilation ducts and windows may experience variations during the work due to the requirements of the execution project, technical or legal requirements, or in order to improve the functionality of the houses. The textures and materials, as well as the furniture expressed in this plan are merely indicative and informative. Some turn of door or disposition of toilets may suffer some variation. The houses are sold unfurnished.



Note: The surfaces expressed, the dimensioning of pillars, the levels, steps of stairs, the situation of the downspouts, ventilation ducts and windows may experience variations during the work due to the requirements of the execution project, technical or legal requirements, or in order to improve the functionality of the houses. The textures and materials, as well as the furniture expressed in this plan are merely indicative and informative. Some turn of door or disposition of toilets may suffer some variation. The houses are sold unfurnished.



# Amenities



Penthouses



387 Apartments



2 y 3 Bedrooms



Private Terraces



Private Parkings



24h Security



Elevator



Green Areas and Pools



Panoramic Views



BBQ y Gazebos



Children's Area





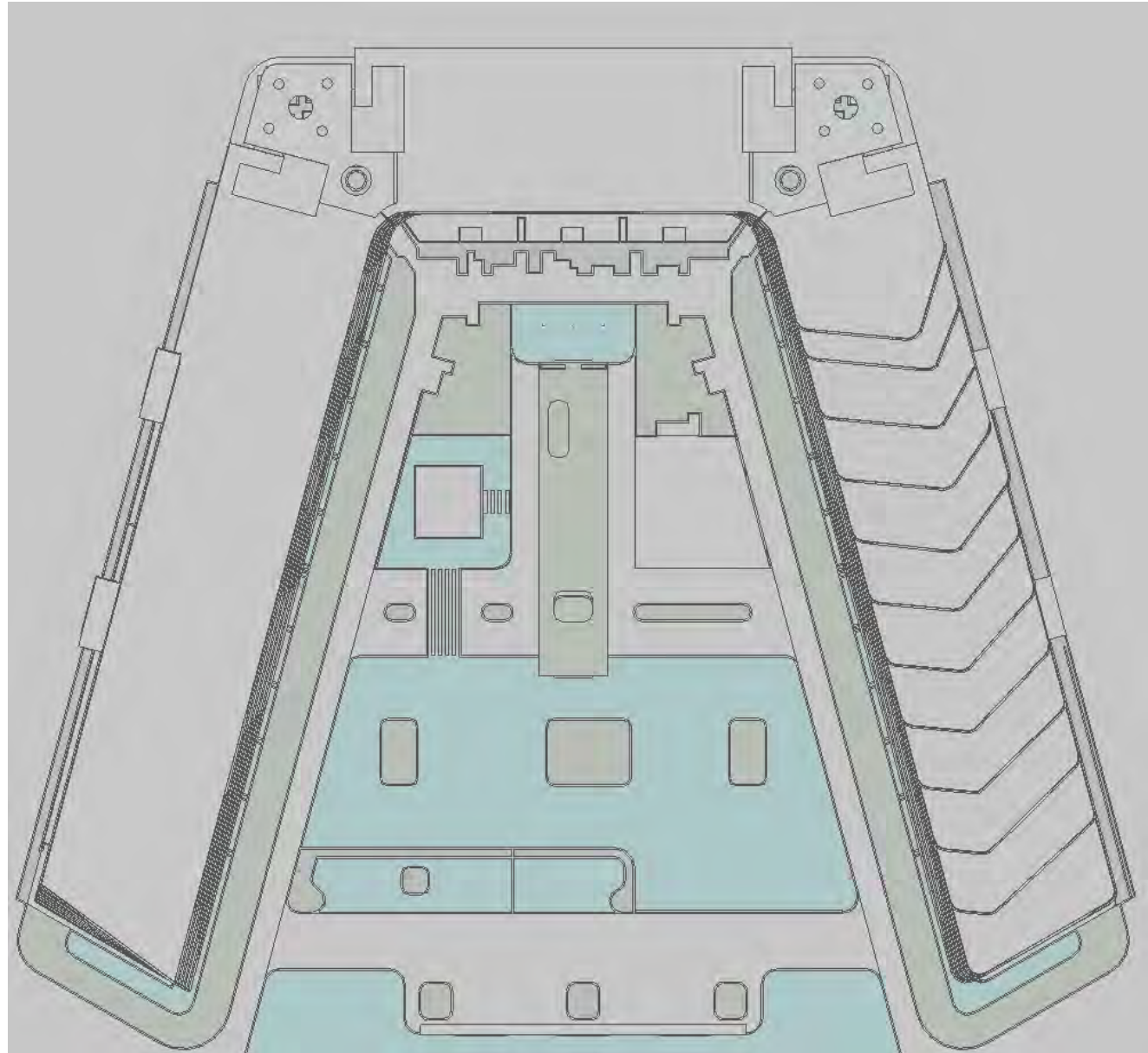
### Horizon View



BROADWALK



[www.larimarcity.com](http://www.larimarcity.com)



Note: The surfaces expressed, the dimensioning of pillars, the levels, steps of stairs, the situation of the downspouts, ventilation ducts and windows may experience variations during the work due to the requirements of the execution project, technical or legal requirements, or in order to improve the functionality of the houses. The textures and materials, as well as the furniture expressed in this plan are merely indicative and informative. Some turn of door or disposition of toilets may suffer some variation. The houses are sold unfurnished.



## Horizon View Level 1

### Apartments type A.1

Interior area: 1.177,68 S.Q. FT. 109,41 S.Q. M.

Terrace area (N1): 291,49 S.Q. FT. 27,08 S.Q. M.

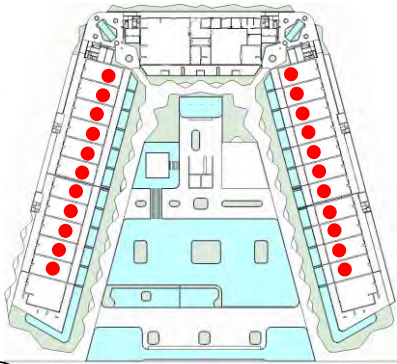
Pool area (N1): 295,79 S.Q. FT. 27,48 S.Q. M.

2 BEDROOMS

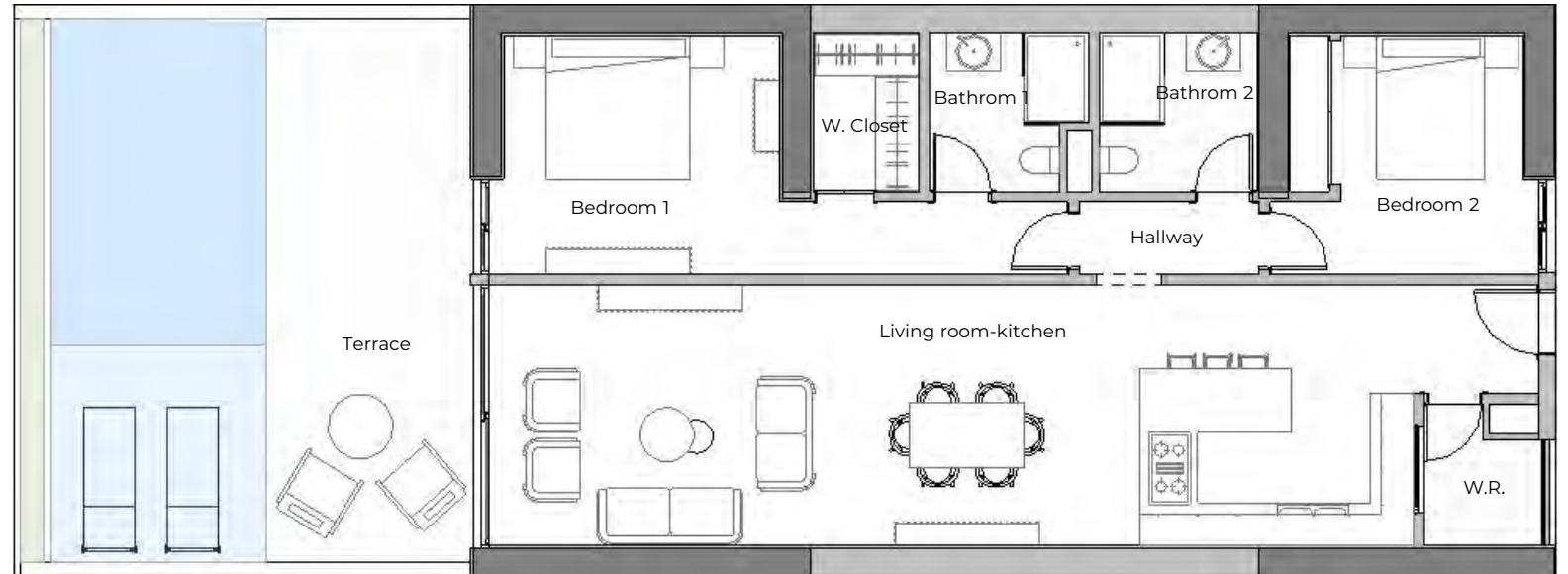
2 BATHROOMS

PRIVATE TERRACE

PRIVATE POOL



[www.larimarcity.com](http://www.larimarcity.com)



Note: The surfaces expressed, the dimensioning of pillars, the levels, steps of stairs, the situation of the downspouts, ventilation ducts and windows may experience variations during the work due to the requirements of the execution project, technical or legal requirements, or in order to improve the functionality of the houses. The textures and materials, as well as the furniture expressed in this plan are merely indicative and informative. Some turn of door or disposition of toilets may suffer some variation. The houses are sold unfurnished.





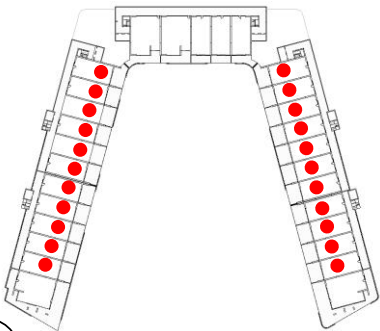
## Horizon View

Level 2 to level 6

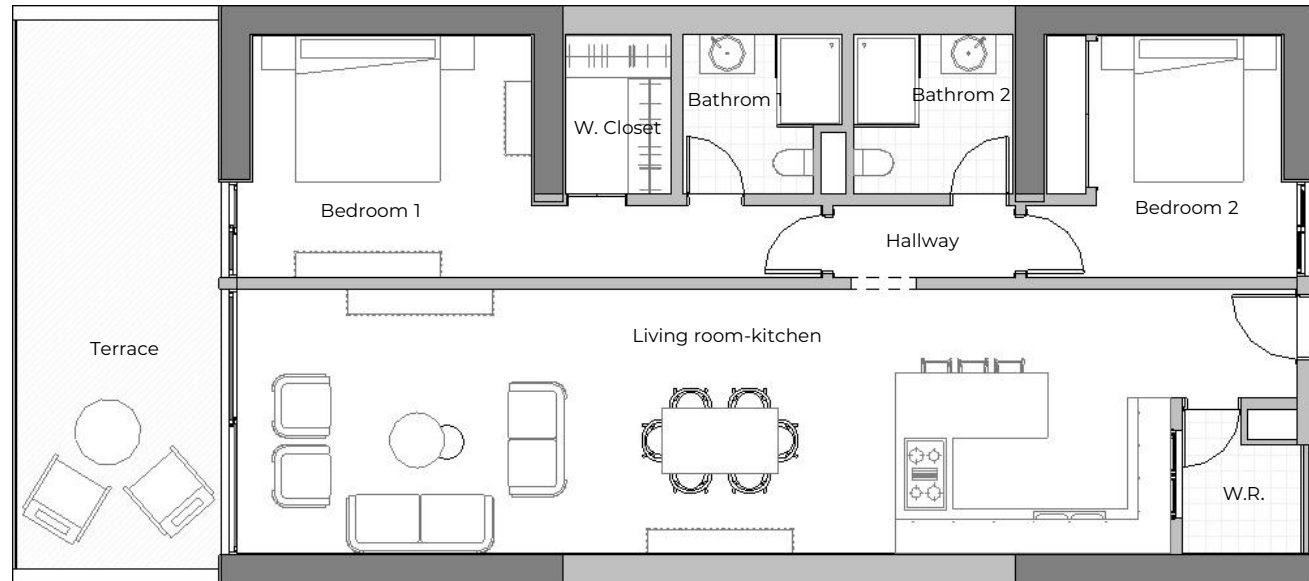
Apartments type A.1

Interior area: 1.177,68 S.Q. FT. 109,41 S.Q. M.  
Terrace area (N2): 509,67 S.Q. FT. 47,35 S.Q. M.  
Terrace area (N3): 468,34 S.Q. FT. 43,51 S.Q. M.  
Terrace area (N4): 428,19 S.Q. FT. 39,78 S.Q. M.  
Terrace area (N5): 384,49 S.Q. FT. 35,72 S.Q. M.  
Terrace area (N6): 345,31 S.Q. FT. 32,08 S.Q. M.

2 BEDROOMS  
2 BATHROOMS  
PRIVATE TERRACE



[www.larimarcity.com](http://www.larimarcity.com)



Note: The surfaces expressed, the dimensioning of pillars, the levels, steps of stairs, the situation of the downspouts, ventilation ducts and windows may experience variations during the work due to the requirements of the execution project, technical or legal requirements, or in order to improve the functionality of the houses. The textures and materials, as well as the furniture expressed in this plan are merely indicative and informative. Some turn of door or disposition of toilets may suffer some variation. The houses are sold unfurnished.

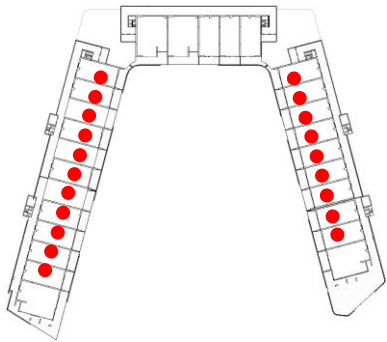


## Horizon View Level 7 to level 15

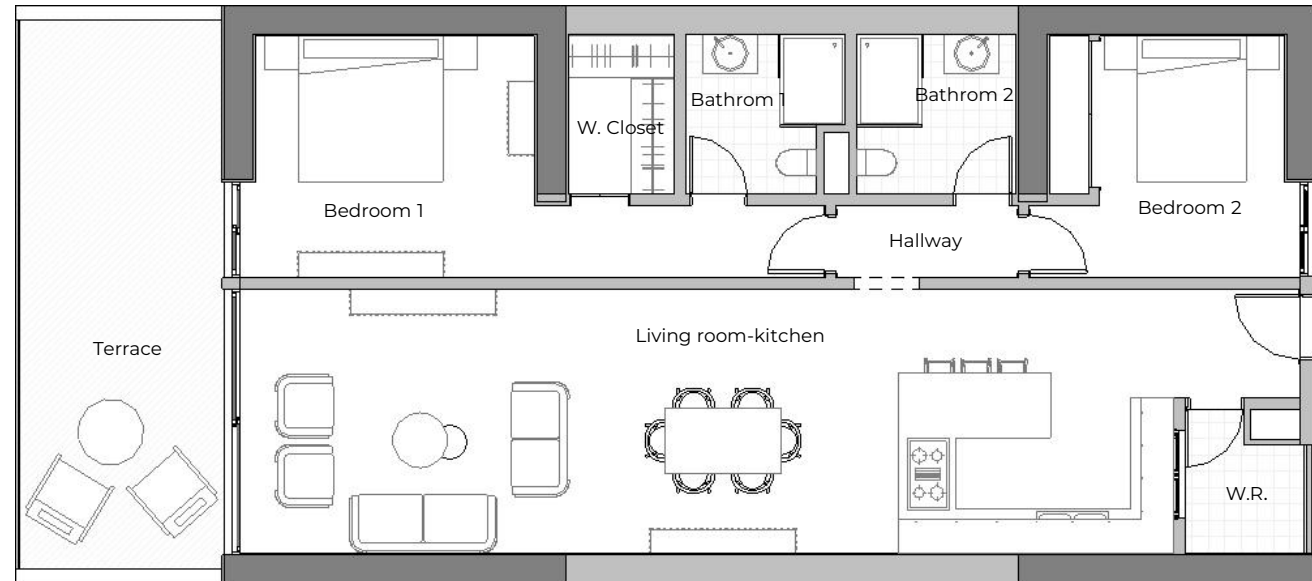
Apartments type A.1

Interior area: 1.177,68 S.Q. FT. 109,41 S.Q. M.  
Terrace area: 299,02 S.Q. FT. 27,78 S.Q. M.

2 BEDROOMS  
2 BATHROOMS  
PRIVATE TERRACE



[www.larimarcity.com](http://www.larimarcity.com)



Note: The surfaces expressed, the dimensioning of pillars, the levels, steps of stairs, the situation of the downspouts, ventilation ducts and windows may experience variations during the work due to the requirements of the execution project, technical or legal requirements, or in order to improve the functionality of the houses. The textures and materials, as well as the furniture expressed in this plan are merely indicative and informative. Some turn of door or disposition of toilets may suffer some variation. The houses are sold unfurnished.

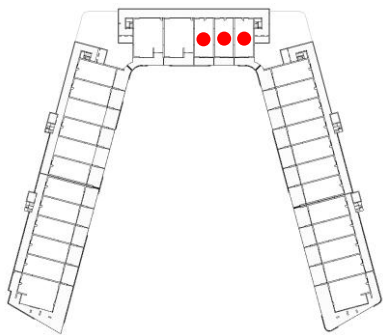


## Horizon View Level 2 to level 16

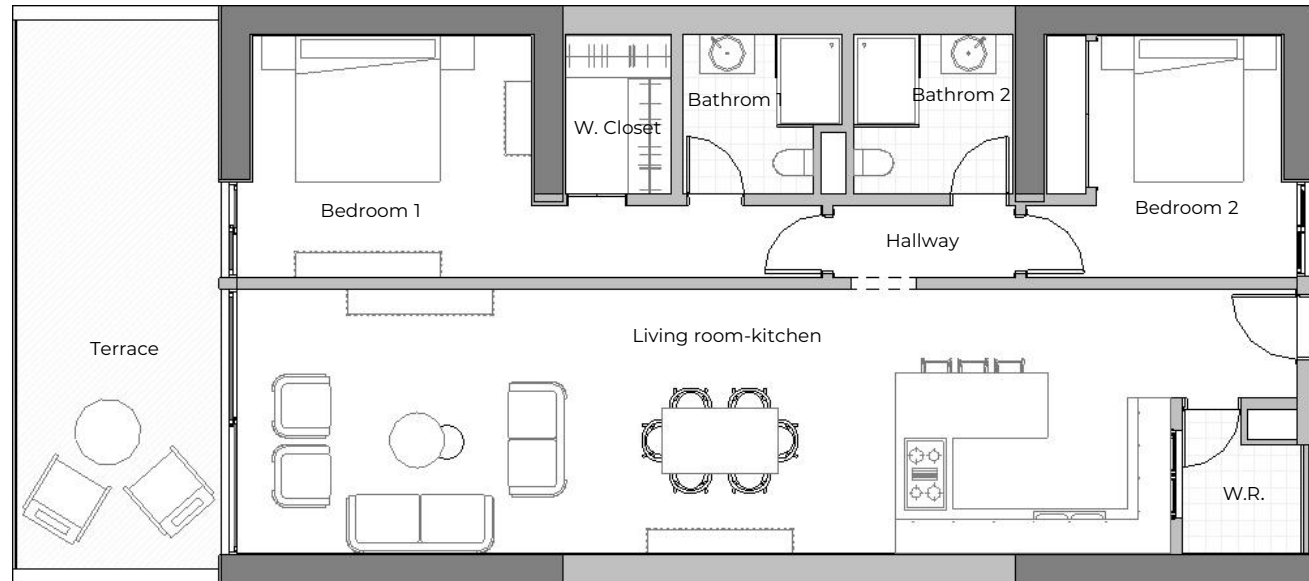
### Apartments type A.2

Interior area: 1,216,97 S.Q. FT. 113,06 S.Q. M.  
Terrace area: 256,83 S.Q. FT. 23,86 S.Q. M.

2 BEDROOMS  
2 BATHROOMS  
PRIVATE TERRACE



[www.larimarcity.com](http://www.larimarcity.com)



Note: The surfaces expressed, the dimensioning of pillars, the levels, steps of stairs, the situation of the downspouts, ventilation ducts and windows may experience variations during the work due to the requirements of the execution project, technical or legal requirements, or in order to improve the functionality of the houses. The textures and materials, as well as the furniture expressed in this plan are merely indicative and informative. Some turn of door or disposition of toilets may suffer some variation. The houses are sold unfurnished.

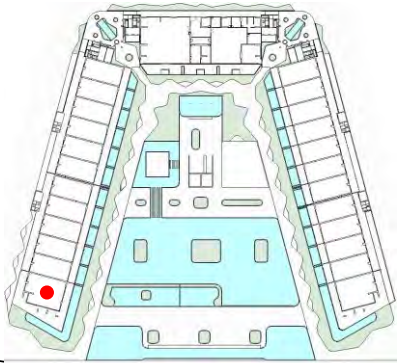


## Horizon View Level 1

### Apartments type B.1

Interior area: 1.739,45 S.Q. FT. 161,60 S.Q. M.  
Terrace area: 1.468,95 S.Q. FT. 136,47 S.Q. M.  
Pool area: 1.238,06 S.Q. FT. 115,02 S.Q. M.

- 3 BEDROOMS
- 3 BATHROOMS
- PRIVATE TERRACE
- PRIVATE POOL



[www.larimarcity.com](http://www.larimarcity.com)



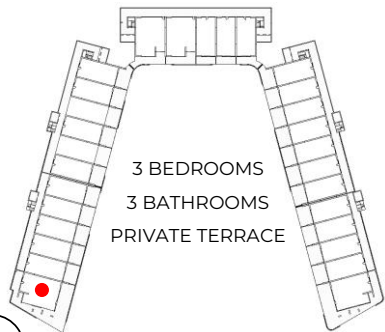
Note: The surfaces expressed, the dimensioning of pillars, the levels, steps of stairs, the situation of the downspouts, ventilation ducts and windows may experience variations during the work due to the requirements of the execution project, technical or legal requirements, or in order to improve the functionality of the houses. The textures and materials, as well as the furniture expressed in this plan are merely indicative and informative. Some turn of door or disposition of toilets may suffer some variation. The houses are sold unfurnished.



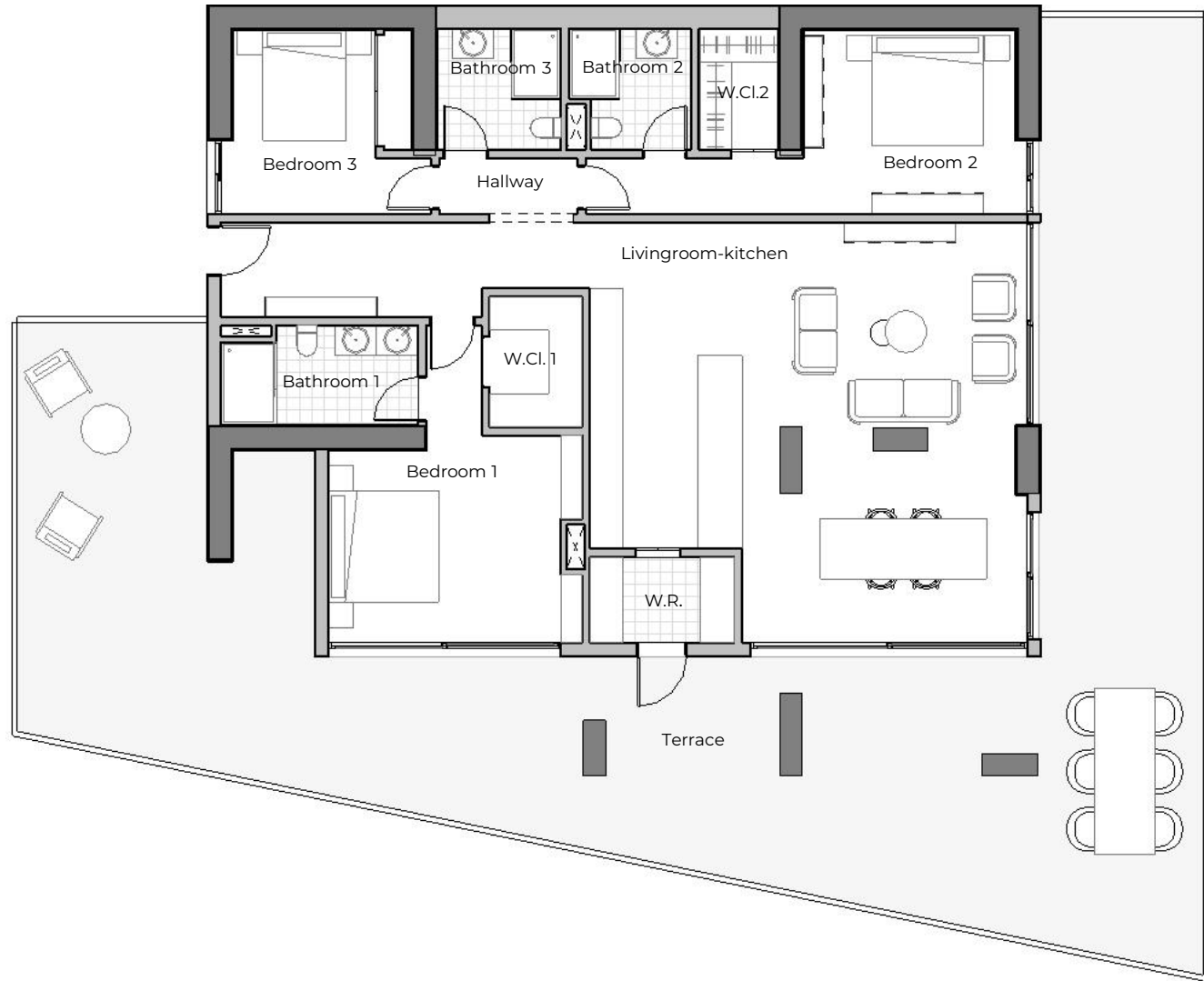
## Horizon View Level 2 to level 10

### Apartments type B.1

Interior area:	1.739,45 S.Q. FT.	161,60 S.Q. M.
Terrace area (N2):	2.034,16 S.Q. FT.	188,98 S.Q. M.
Terrace area (N3):	1.937,18 S.Q. FT.	179,97 S.Q. M.
Terrace area (N4):	1.835,35 S.Q. FT.	170,51 S.Q. M.
Terrace area (N5):	1.729,01 S.Q. FT.	160,63 S.Q. M.
Terrace area (N6):	1.622,98 S.Q. FT.	150,78 S.Q. M.
Terrace area (N7):	1.527,18 S.Q. FT.	141,88 S.Q. M.
Terrace area (N8):	1.530,20 S.Q. FT.	142,16 S.Q. M.
Terrace area (N9):	1.479,93 S.Q. FT.	137,49 S.Q. M.
Terrace area (N10):	1.460,56 S.Q. FT.	135,69 S.Q. M.



[www.larimarcity.com](http://www.larimarcity.com)



Note: The surfaces expressed, the dimensioning of pillars, the levels, steps of stairs, the situation of the downspouts, ventilation ducts and windows may experience variations during the work due to the requirements of the execution project, technical or legal requirements, or in order to improve the functionality of the houses. The textures and materials, as well as the furniture expressed in this plan are merely indicative and informative. Some turn of door or disposition of toilets may suffer some variation. The houses are sold unfurnished.

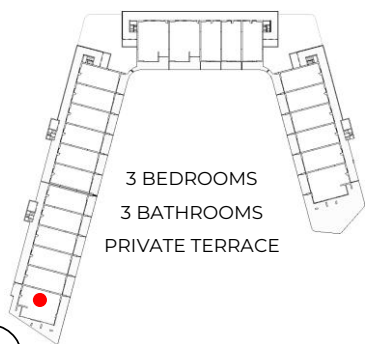


## Horizon View

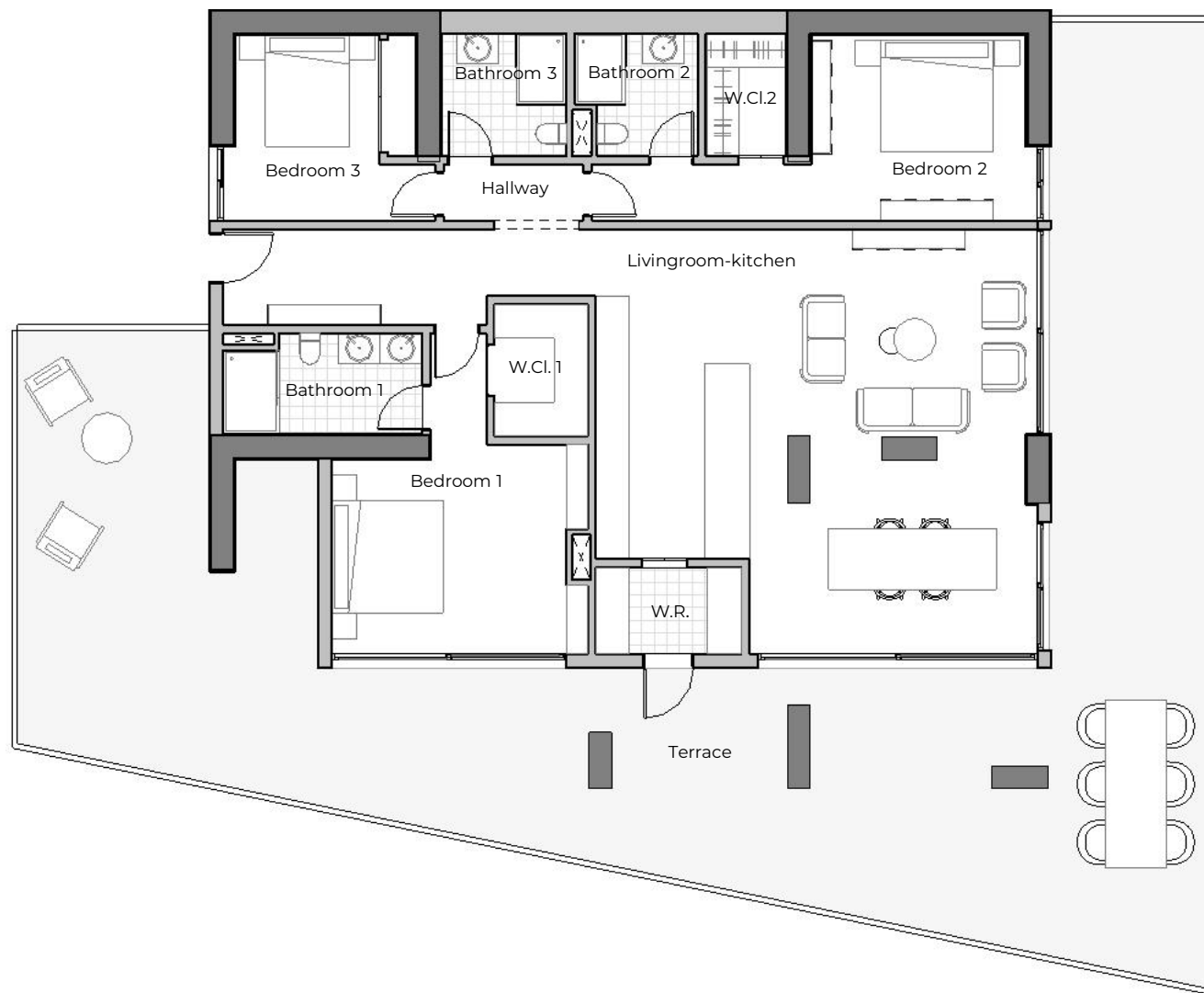
Level 11 to level 16

Apartments type B.1

Interior area: 1.739,45 S.Q. FT. 161,60 S.Q. M.  
 Terrace area (N11): 1.451,84 S.Q. FT. 134,88 S.Q. M.  
 Terrace area (N12): 1.415,45 S.Q. FT. 131,50 S.Q. M.  
 Terrace area (N13): 1.404,80 S.Q. FT. 130,51 S.Q. M.  
 Terrace area (N14): 1.377,24 S.Q. FT. 127,95 S.Q. M.  
 Terrace area (N15): 1.371,75 S.Q. FT. 127,44 S.Q. M.  
 Terrace area (N16): 1.339,57 S.Q. FT. 124,45 S.Q. M.



[www.larimarcity.com](http://www.larimarcity.com)



Note: The surfaces expressed, the dimensioning of pillars, the levels, steps of stairs, the situation of the downspouts, ventilation ducts and windows may experience variations during the work due to the requirements of the execution project, technical or legal requirements, or in order to improve the functionality of the houses. The textures and materials, as well as the furniture expressed in this plan are merely indicative and informative. Some turn of door or disposition of toilets may suffer some variation. The houses are sold unfurnished.

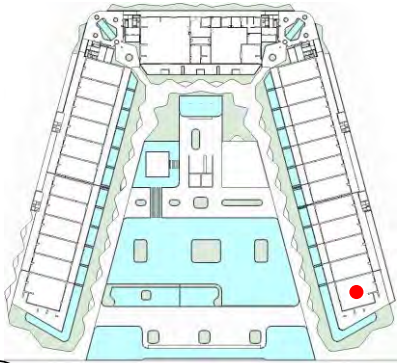


## Horizon View Level 1

### Apartments type B.2

Interior area: 1.739,45 S.Q. FT. 161,60 S.Q. M.  
Terrace area: 1.410,40 S.Q. FT. 131,03 S.Q. M.  
Pool area: 1.222,35 S.Q. FT. 113,56 S.Q. M.

- 3 BEDROOMS
- 3 BATHROOMS
- PRIVATE TERRACE
- PRIVATE POOL



[www.larimarcity.com](http://www.larimarcity.com)



Note: The surfaces expressed, the dimensioning of pillars, the levels, steps of stairs, the situation of the downspouts, ventilation ducts and windows may experience variations during the work due to the requirements of the execution project, technical or legal requirements, or in order to improve the functionality of the houses. The textures and materials, as well as the furniture expressed in this plan are merely indicative and informative. Some turn of door or disposition of toilets may suffer some variation. The houses are sold unfurnished.

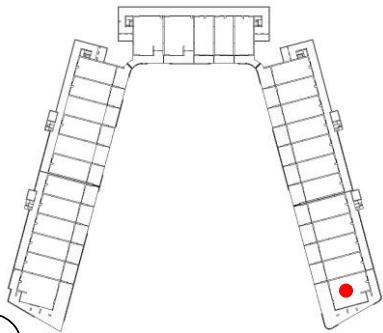


## Horizon View

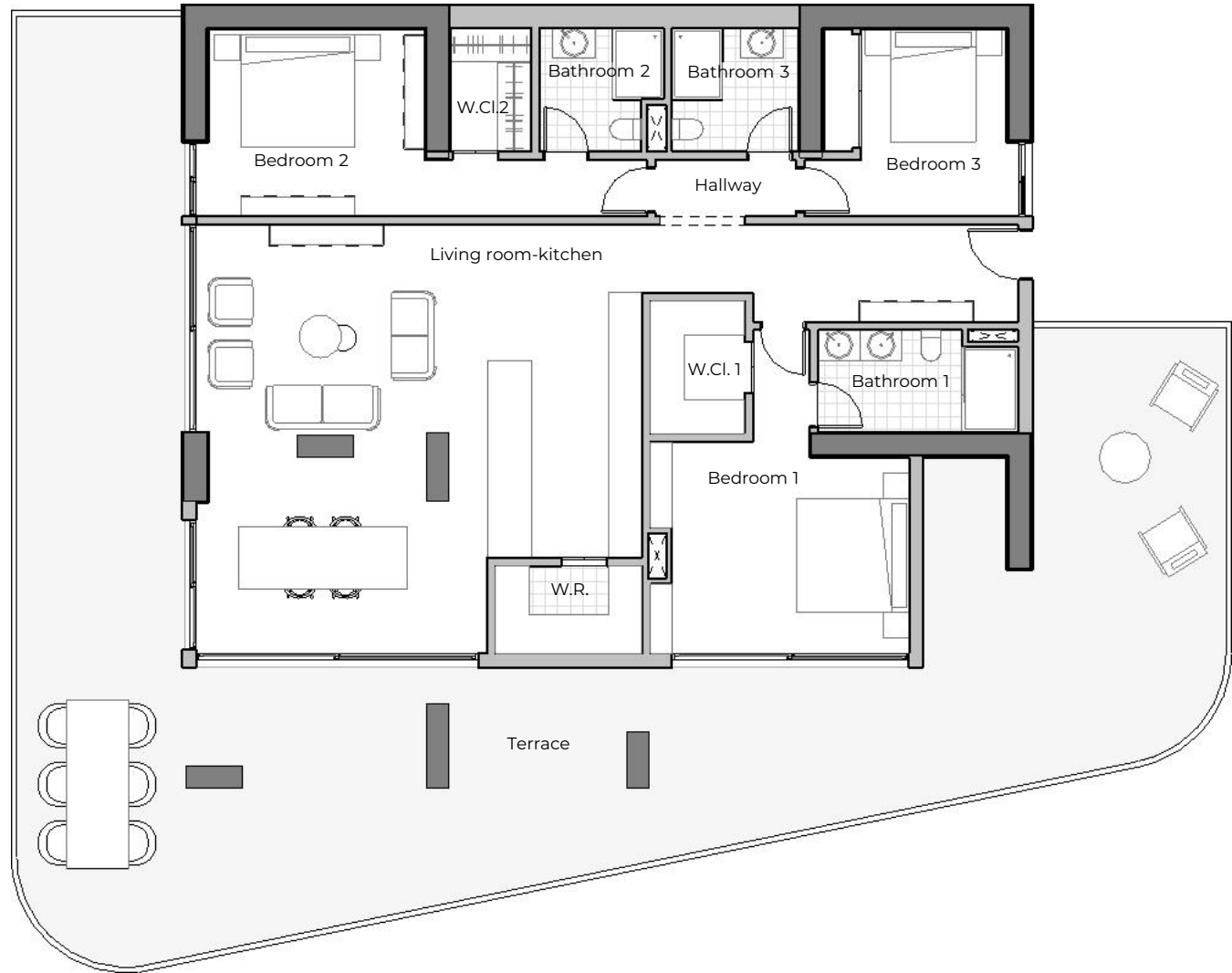
Level 2 to level 5  
Apartments type B.2

Interior area: 1.739,45 S.Q. FT. 161,60 S.Q. M.  
Terrace area (N2): 1.992,62 S.Q. FT. 185,12 S.Q. M.  
Terrace area (N3): 1.895,85 S.Q. FT. 176,13 S.Q. M.  
Terrace area (N4): 1.809,63 S.Q. FT. 168,12 S.Q. M.  
Terrace area (N5): 1.722,98 S.Q. FT. 160,07 S.Q. M.

3 BEDROOMS  
3 BATHROOMS  
PRIVATE TERRACE



[www.larimarcity.com](http://www.larimarcity.com)



Note: The surfaces expressed, the dimensioning of pillars, the levels, steps of stairs, the situation of the downspouts, ventilation ducts and windows may experience variations during the work due to the requirements of the execution project, technical or legal requirements, or in order to improve the functionality of the houses. The textures and materials, as well as the furniture expressed in this plan are merely indicative and informative. Some turn of door or disposition of toilets may suffer some variation. The houses are sold unfurnished.



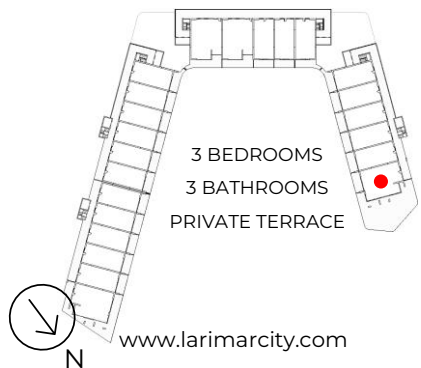


## Horizon View

Level 6 to level 16

### Apartments type B.2

Interior area:	1.739,45 S.Q. FT.	161,60 S.Q. M.
Terrace area (N6):	3.369,75 S.Q. FT.	313,06 S.Q. M.
Terrace area (N7):	3.125,30 S.Q. FT.	290,35 S.Q. M.
Terrace area (N8):	3.178,04 S.Q. FT.	295,25 S.Q. M.
Terrace area (N9):	3.206,46 S.Q. FT.	297,89 S.Q. M.
Terrace area (N10):	3.226,70 S.Q. FT.	299,77 S.Q. M.
Terrace area (N11):	3.241,55 S.Q. FT.	301,15 S.Q. M.
Terrace area (N12):	3.242,74 S.Q. FT.	301,26 S.Q. M.
Terrace area (N13):	3.106,25 S.Q. FT.	288,58 S.Q. M.
Terrace area (N14):	3.216,26 S.Q. FT.	298,80 S.Q. M.
Terrace area (N15):	3.171,16 S.Q. FT.	294,61 S.Q. M.
Terrace area (N16):	3.154,04 S.Q. FT.	293,02 S.Q. M.



Note: The surfaces expressed, the dimensioning of pillars, the levels, steps of stairs, the situation of the downspouts, ventilation ducts and windows may experience variations during the work due to the requirements of the execution project, technical or legal requirements, or in order to improve the functionality of the houses. The textures and materials, as well as the furniture expressed in this plan are merely indicative and informative. Some turn of door or disposition of toilets may suffer some variation. The houses are sold unfurnished.



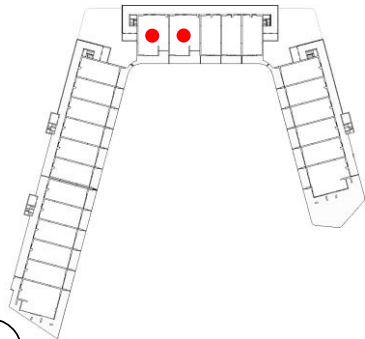
# Horizon View

Level 2 to level 14

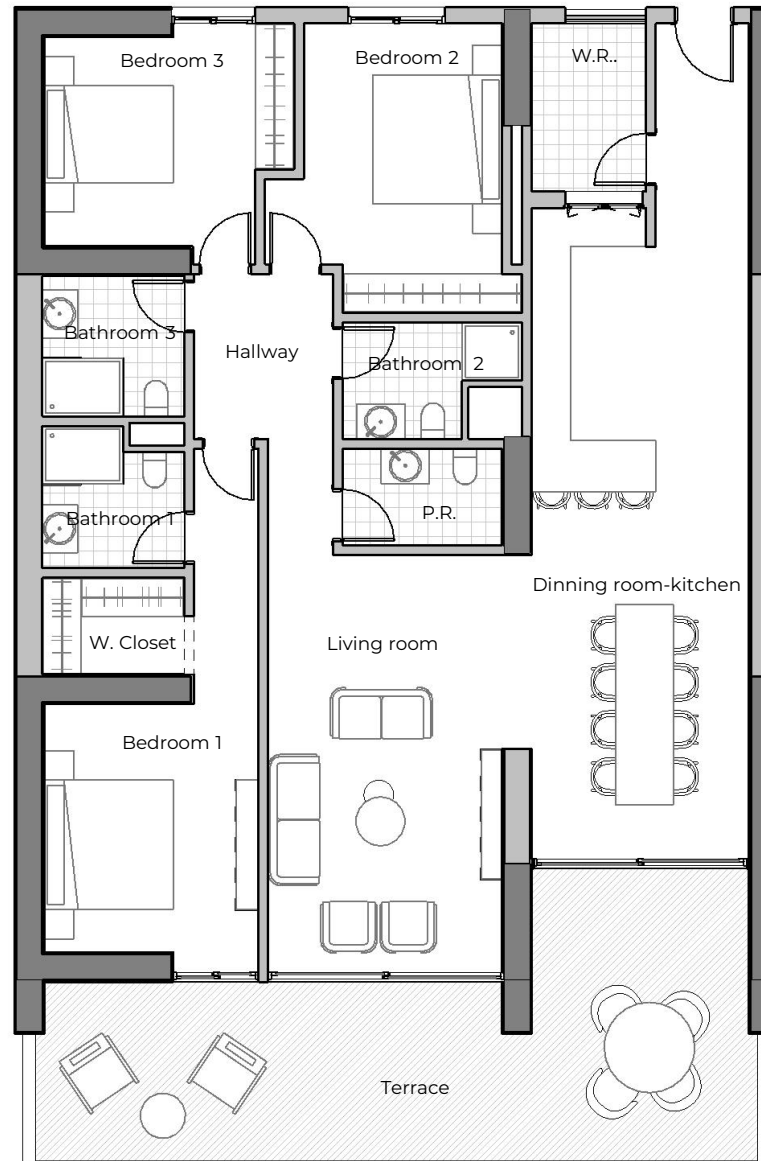
## Apartments type D

Interior area: 1.768,30 S.Q. FT. 164,28 S.Q. M.  
Terrace area: 416,03 S.Q. FT. 38,65 S.Q. M.

- 3 BEDROOMS
- 3 BATHROOMS
- PRIVATE TERRACE



[www.larimarcity.com](http://www.larimarcity.com)



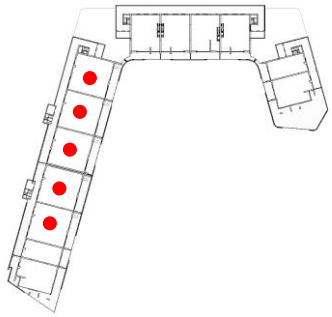
Note: The surfaces expressed, the dimensioning of pillars, the levels, steps of stairs, the situation of the downspouts, ventilation ducts and windows may experience variations during the work due to the requirements of the execution project, technical or legal requirements, or in order to improve the functionality of the houses. The textures and materials, as well as the furniture expressed in this plan are merely indicative and informative. Some turn of door or disposition of toilets may suffer some variation. The houses are sold unfurnished.



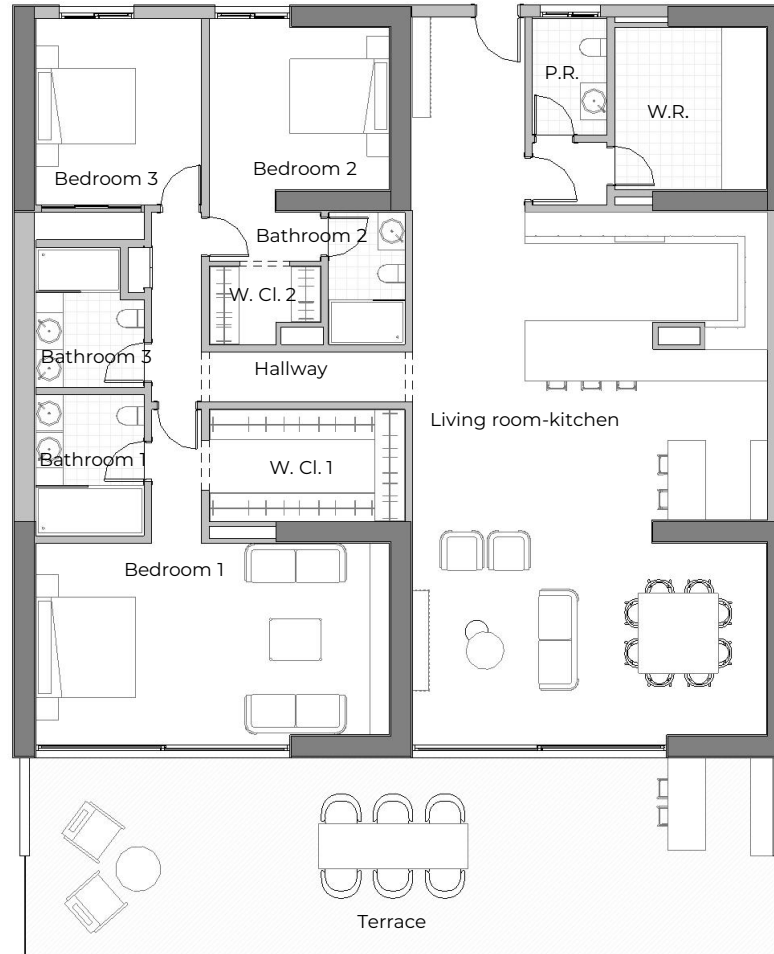
**Horizon View**  
Level 15 to level 16  
Apartments type E

Interior area: 2.355,36 S.Q. FT. 218,82 S.Q. M.  
Terrace area: 551,11 S.Q. FT. 51,20 S.Q. M.

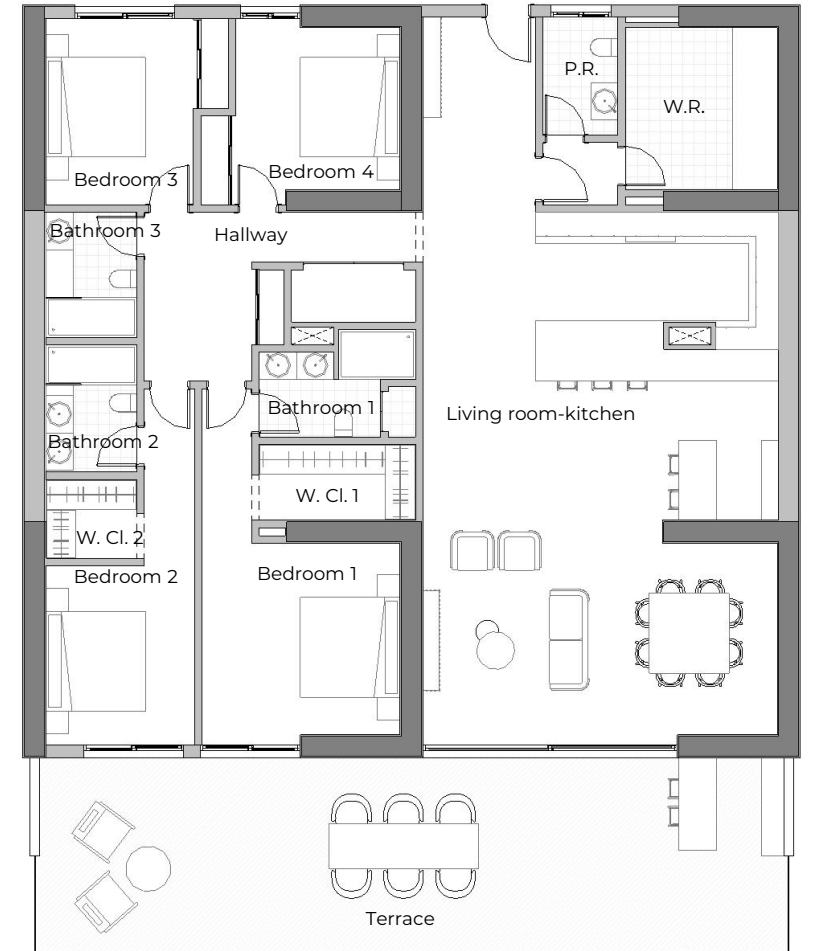
3 BEDROOMS  
3 BATHROOMS  
PRIVATE TERRACE



[www.larimarcity.com](http://www.larimarcity.com)



Option 1



Option 2

Nota: Las superficies expresadas, el dimensionamiento de pilares, los niveles, escalones de escaleras, la situación de las bajantes, conductos de ventilación y ventanas podrán experimentar variaciones durante la obra por exigencias del proyecto de ejecución, exigencias técnicas o jurídicas, o con objeto de mejorar la funcionalidad de las viviendas. Las texturas y los materiales, así como el mobiliario expresado en este plano son meramente orientativos e informativos. Algún giro de puerta o disposición de sanitarios podrá sufrir alguna variación. Las viviendas se venden sin amueblar.



## Horizon View

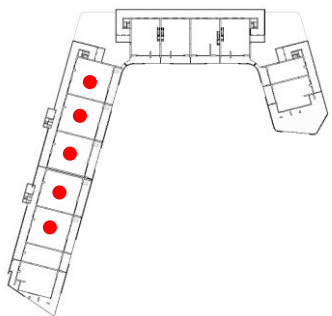
Level 15 +16

Penthouse type F.1

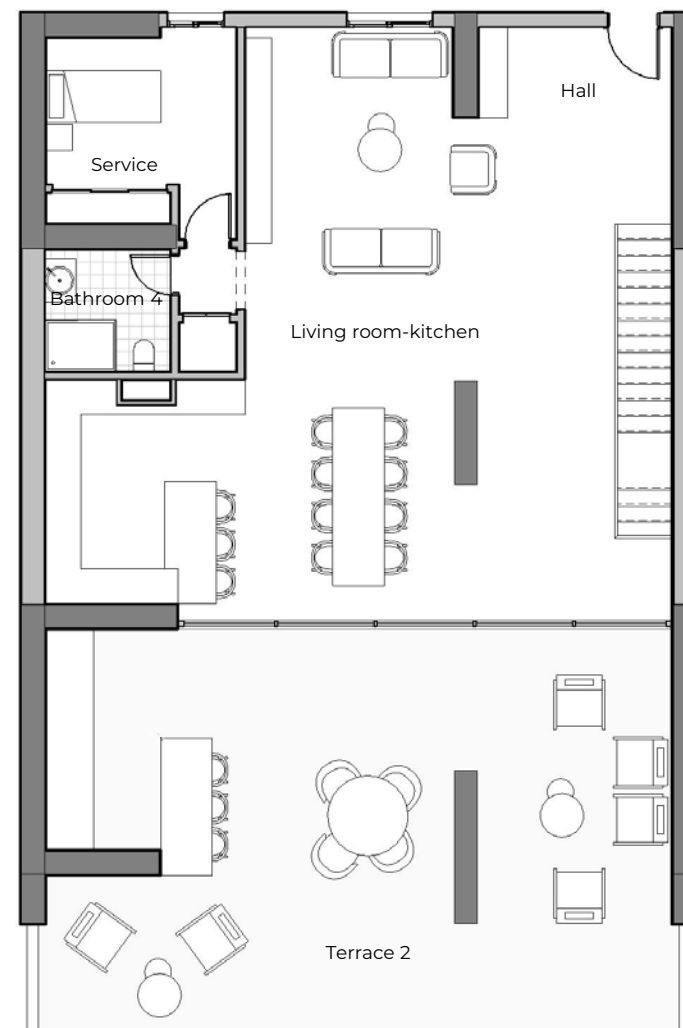
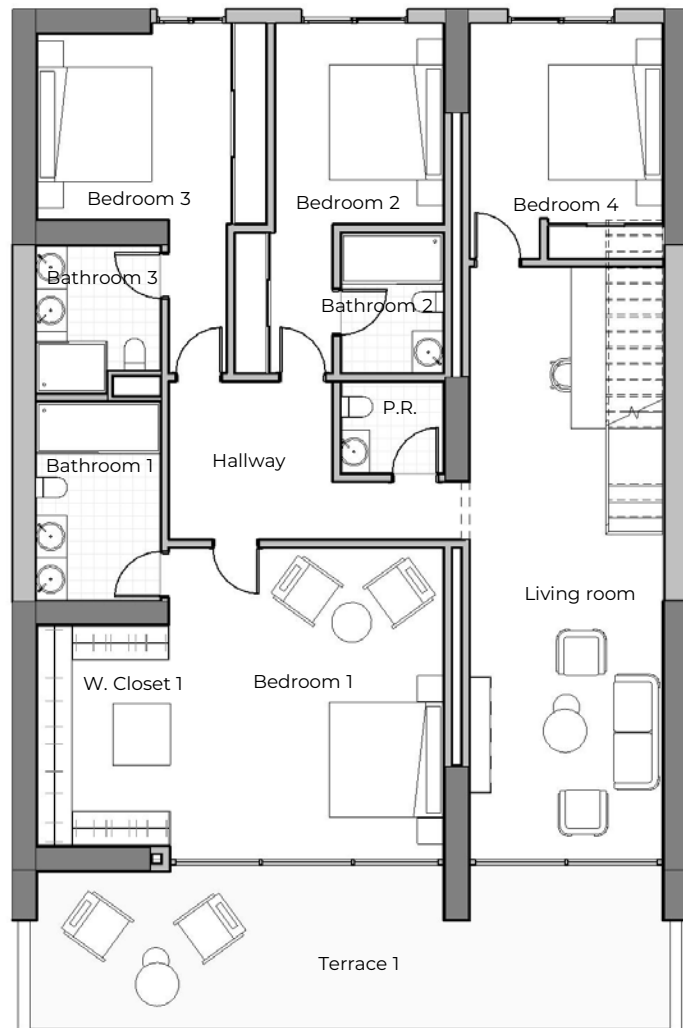
Interior area: 3,146,72 S.Q. FT. 292,34 S.Q. M.

Terrace area: 1,219,34 S.Q. FT. 113,28 S.Q. M.

4 BEDROOMS  
4 BATHROOMS  
PRIVATE TERRACE



[www.larimarcity.com](http://www.larimarcity.com)



Nota: Las superficies expresadas, el dimensionamiento de pilares, los niveles, escalones de escaleras, la situación de las bajantes, conductos de ventilación y ventanas podrán experimentar variaciones durante la obra por exigencias del proyecto de ejecución, exigencias técnicas o jurídicas, o con objeto de mejorar la funcionalidad de las viviendas. Las texturas y los materiales, así como el mobiliario expresado en este plano son meramente orientativos e informativos. Algún giro de puerta o disposición de sanitarios podrá sufrir alguna variación. Las viviendas se venden sin amueblar.



Note: The surfaces expressed, the dimensioning of pillars, the levels, steps of stairs, the situation of the downspouts, ventilation ducts and windows may experience variations during the work due to the requirements of the execution project, technical or legal requirements, or in order to improve the functionality of the houses. The textures and materials, as well as the furniture expressed in this plan are merely indicative and informative. Some turn of door or disposition of toilets may suffer some variation. The houses are sold unfurnished.



Note: The surfaces expressed, the dimensioning of pillars, the levels, steps of stairs, the situation of the downspouts, ventilation ducts and windows may experience variations during the work due to the requirements of the execution project, technical or legal requirements, or in order to improve the functionality of the houses. The textures and materials, as well as the furniture expressed in this plan are merely indicative and informative. Some turn of door or disposition of toilets may suffer some variation. The houses are sold unfurnished.





Note: The surfaces expressed, the dimensioning of pillars, the levels, steps of stairs, the situation of the downspouts, ventilation ducts and windows may experience variations during the work due to the requirements of the execution project, technical or legal requirements, or in order to improve the functionality of the houses. The textures and materials, as well as the furniture expressed in this plan are merely indicative and informative. Some turn of door or disposition of toilets may suffer some variation. The houses are sold unfurnished.





LARIMAR

CITY & RESORT

